



Welcome!

Iowa City Gateway Project

Dubuque Street Elevation and
Park Road Bridge Replacement Project

Thank you for joining us.

Please sign in!

Agenda:

Open House: 4:30 - 7 p.m.

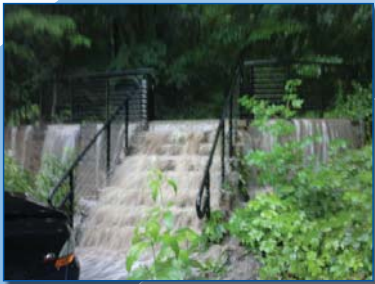
Presentation: 5:30 p.m.



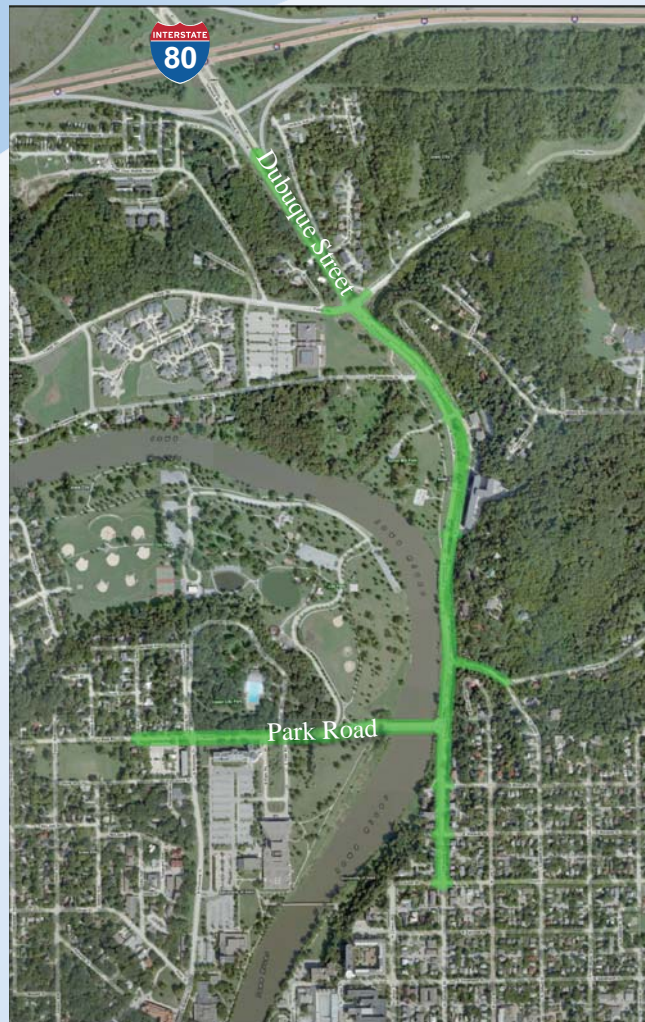
Project Need

The City of Iowa City is starting work on the Iowa City Gateway project. The project is planned to:

- Reduce closures of Dubuque Street and Park Road Bridge due to (1) localized flash floods and (2) historic Iowa River flood events
- Minimize upstream flood backwater caused by the existing Park Road Bridge
- Better serve transit, pedestrians and bicyclists
- Preserve and enhance the natural entry to Iowa City from I-80



*June 2010 -
Heavy Rain*



Study Area



*June 2008 -
Flooding*



Project Schedule

Overall Project Schedule

	2011	2012	2013	2014	2015
Phase 1 - NEPA Study	■	■			
Phase 2 - Design			■	■	
Phase 3 - Construction				■	■

Projected Construction Start

We are here



Phase 1 Plan

The planning process, called a NEPA study is expected to be completed by mid 2012.

NEPA is required by the federal government.



Phase 2 Design

After the NEPA process is completed, final design work will begin. Detailed design and engineering will take approximately 18 to 20 months



Phase 3 Construction

Construction could begin as early as the spring of 2014. At this time, the team estimates that work will take approximately two construction seasons.



Phase 1: Plan



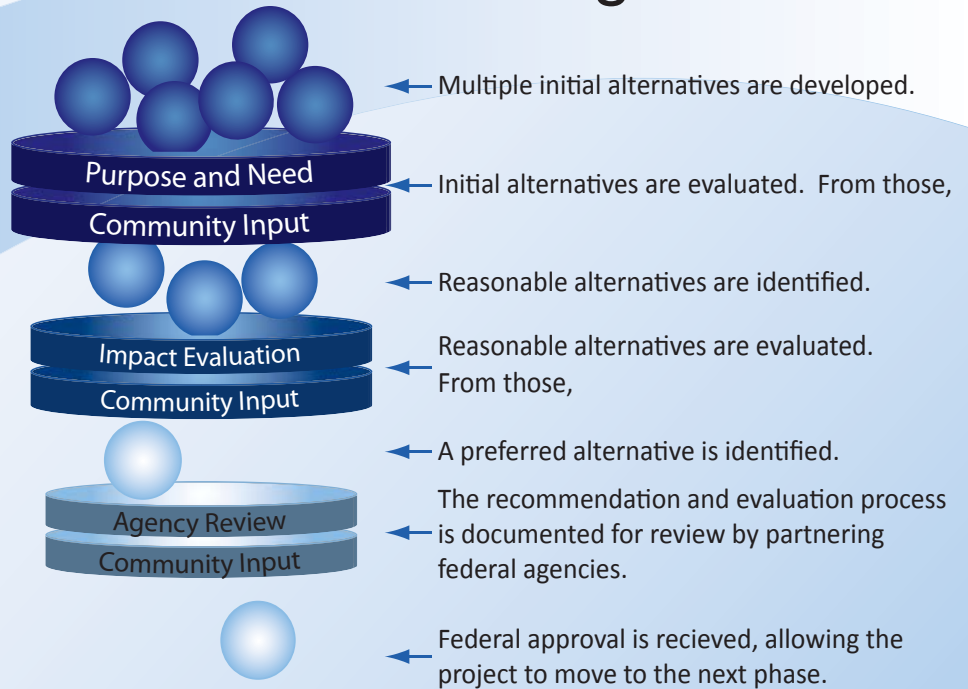
Phase 1 of the Iowa City Gateway project will be completion of the National Environmental Policy Act (NEPA) planning process. NEPA is required for projects that will seek federal funds and/or federal permits.

Beyond legal requirements, however, the NEPA process helps governmental agencies and local communities make well-informed decisions about future projects.

Additionally, the process gives the community (1) access to information used by agencies in selecting a preferred alternative and (2) a chance to have input into those public decisions.

The NEPA process will conclude with a recommendation for improvements and federal approval.

The NEPA Planning Process



Preliminary Phase 1 Schedule

	2011				2012	
	Q1	Q2	Q3	Q4	Q1	Q2
Data Collection	█					
Purpose and Need Development	█	█				
Initial Alternatives Development		█				
Public Meeting 1	★					
Reasonable Alternatives Identified		█				
Reasonable Alternatives Evaluated		█	█			
Public Meeting 2			★			
Preferred Alternative Identified			█			
NEPA Document Prepared			█	█		
NEPA Document Federal Review				█	█	
Public Meeting 3					★	
Comments Addressed					█	
NEPA Document Finalized						█
Anticipated Federal Approval						█



Draft Purpose and Need



The project's formal Purpose and Need is a critical part of the NEPA planning process. It not only guides what the project should do, it defines the key criteria by which options are evaluated. The draft Iowa City Gateway Purpose and Need is:

Draft Project Purpose:

Provide a reliable multimodal transportation corridor that reduces the impact of flooding on the local transportation system and the Iowa River corridor

Draft Project Need:

Maximize the reliability of the Dubuque Street corridor

Maximize the reliability of the Park Road Bridge and corridor

Minimize upstream flood backwater caused by the existing Park Road Bridge

Your thoughts about the Draft Purpose and Need:



Draft Project Goals



Draft primary goals

- Minimize flood related closures of Dubuque Street
- Minimize flood related closures of Park Road Brides and its approaches
- Minimize backwater caused by the bridge
- Maximize access to downtown, neighborhoods and campus
- Maintain emergency access to north Iowa City and Johnson County

Draft secondary goals

- Integrate with Hancher and Mayflower improvements
- Coordinate with other projects
- Accommodate bikes, pedestrians and transit
- Provide improved trail connectivity
- Maintain parkway and natural features of area
- Enhance access to neighborhoods, parks and university facilities
- Integrate utility and sewer relocations

Your thoughts about
the draft goals:



Next Steps



Because the plan will outline what Iowa City will be building, your input early in this planning stage is very important. The Iowa City Gateway will offer a range of opportunities for the community to weigh in, including:

- Two additional public meetings,
- Presentations to community groups,
- Special meetings with neighborhoods, property owners and stakeholders,
- Focus groups,
- Project web site and
- Online surveys.

Overall Project Schedule

	2011	2012	2013	2014	2015
Phase 1 - NEPA Study	[Yellow bar]				
Phase 2 - Design		[Yellow bar]			
Phase 3 - Construction				[Orange bar]	

Projected Construction Start

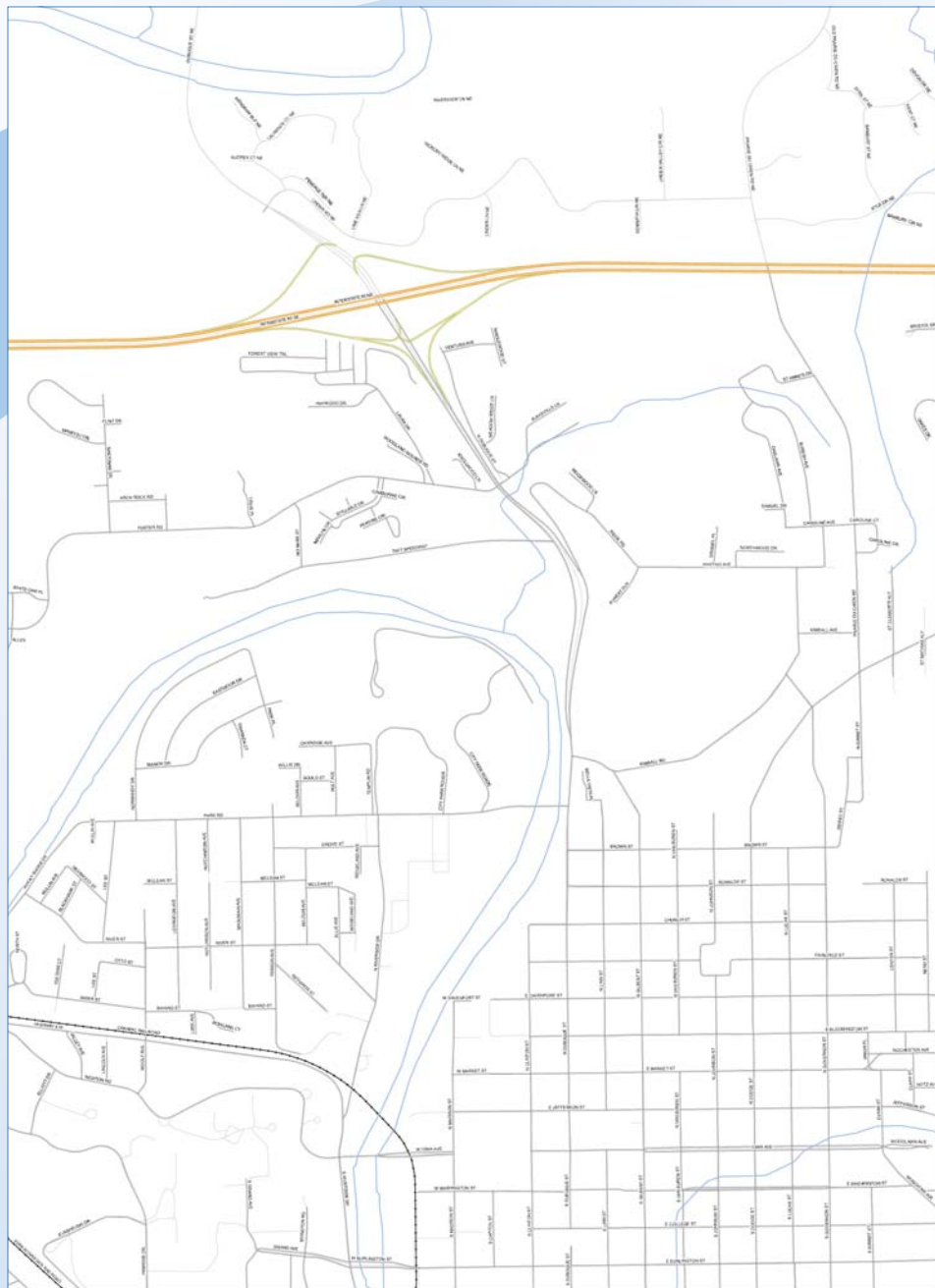




Community Input



We need your input. Please share your knowledge of the area - its history, its needs and the types of solutions that you would like to see.



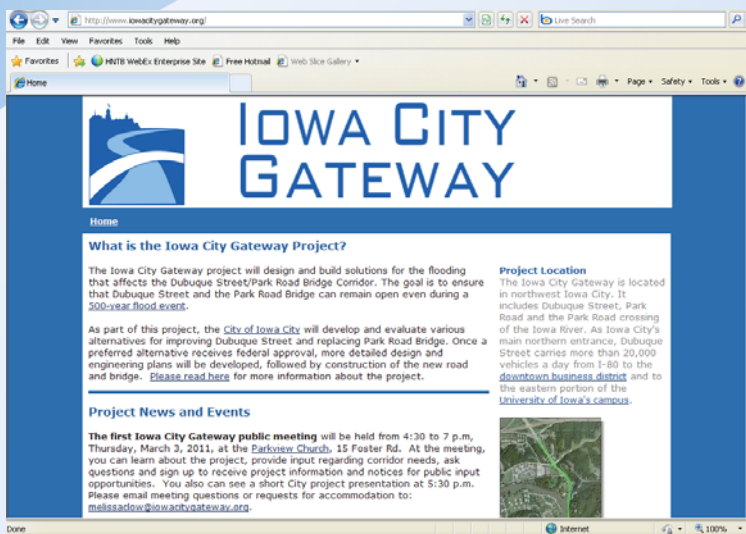


Thank you for your time and interest.

Please sign up to receive project information and notices of other public meetings.

You may leave written comments here, add your thoughts to the map, or talk with a team member.

More project information can be found at www.iowacitygateway.org



In coordination with:

