

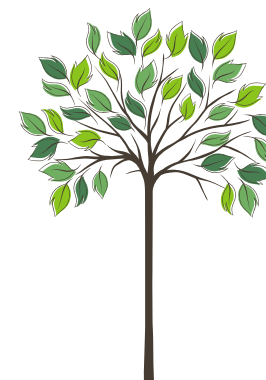
Root for trees.

Trees are an intrinsic part of the quality of life in Iowa City. Trees can improve a neighborhood's appearance and provide health benefits for residents. They can offer shade and provide a wind break, which reduces energy bills. They also remove carbon dioxide from the atmosphere, decrease runoff, and provide habitat for birds and other urban wildlife. Because they have such a variety of benefits which improve our environment, they are an important part of the City's Climate Action Plan.

The City is working to grow and expand our tree canopy coverage and tree diversity. You can help by participating in the Root for Trees program. Fill out an application to receive a tree voucher and save on the purchase of a tree at participating Iowa City locations. Trees obtained through the Root for Trees voucher program must be planted on the purchaser's private property. For residents wishing to plant their tree in the Right-of-Way, a no-fee permit will require City approval before purchasing the tree.

Tree voucher details.

- Tree vouchers are valid for 50% off the retail purchase price of one tree, up to a total cost savings of \$125 (a \$250 tree). The purchaser will be responsible for any cost that exceeds this amount. Vouchers for an additional discount are available to income-eligible households.
- Delivery and installation costs may not be included in the 50% calculation of the purchase price.
- Trees obtained through this voucher program must be planted on the purchaser's private property. For residents wishing to plant their tree in the Right-of-Way, a no-fee permit will require City approval before purchasing the tree.
- Maple and pear tree varieties are not eligible for this program.
- Vouchers are valid for Iowa City residents, only redeemable for one tree purchase, and limited to one tree per residential property.
- Vouchers are valid from September 15, 2021, to May 15, 2022, while supplies last.
- Contact Iowa One Call at 811 at least 72 hours prior to digging so that any utilities can be properly located.
- Voucher Redemption
 - Vouchers may be redeemed at the following locations:
 - Earl May Garden Center
1901 Lower Muscatine Rd.
Iowa City, IA 52240
 - Iowa City Landscaping and Garden Center
520 Highway 1 W
Iowa City, IA 52246



Right tree. Right location.

Step 1



Groundwork.

Steps for success:

- Complete application
- Receive voucher via mail
- Redeem your tree voucher
- Plant your new tree
- Protect, care, grow and enjoy!

Suggested tree types.



Ornamental or small shade:

Smaller sized or for decorative purposes.

- American Hornbeam
- Amur Maackia
- Black Tupelo
- Hophornbeam
- Ohio Buckeye
- Serviceberry
- Yellowwood



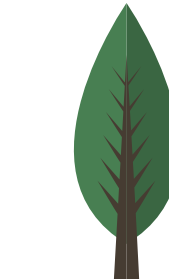
Large shade trees:

Larger sized with large canopy of leaves.

- American Beech
- European Beech
- European Hornbeam
- Hackberry
- Kentucky Coffeetree
- London Plane Tree
- Northern Catalpa



Step 2



Columnar trees:

Narrow, trees that take up less space.

- Columnar European Beech
- Columnar European Hornbeam
- Columnar Oak



Coniferous trees:

Cone bearing deciduous trees or evergreens.

- Bald-Cypress
- Concolor Fir
- White Pine

Step 3



Where to plant.

Draw a basic map of your yard. Using your map, have a look up, down and all around.

Consider:

- Utilities (above and below ground)
- Tree size at maturity
- Neighbors
- Other structures (garage, shed etc.)
- Shade or sun growing conditions





BEFORE YOU DIG:

Contact Iowa One Call to locate any public underground lines at, **811** or iowaonecall.com

Right of way.

Trees obtained through the Root for Trees voucher program must be planted on the purchaser's private property. For residents wishing to plant their tree in the Right-of-Way, a no-fee permit will require City approval before purchasing the tree.

Planting in the Right-Of-Way

"Street trees," typically grown in the City Right-Of-Way (ROW) improve a neighborhood's curbside appearance and help provide a healthy local environment by producing oxygen, removing carbon dioxide and air contaminants, and providing habitat for birds and other wildlife. Tree shade can substantially help to cool homes in the summer, and as a windbreak which can conserve energy used for heating.

What is the City Right-Of-Way (ROW)?

The City Right-Of-Way (ROW), is intended for the movement of the public, including public utilities as defined by City Code 161A. The City ROW typically includes the sidewalk and grassy area between the street and sidewalk, and is owned by the City, but maintained by the abutting property owners, with the exception of tree maintenance (City Code: 16-1A).

Planting within the City ROW

Trees: Planting a tree within the ROW requires a permit, which can be obtained by contacting the Forestry Division at www.icgov.org/tree-planting or at 319-356-5100.

Flowers and shrubs: Flowers and shrubs may be planted in the ROW provided they do not grow taller than 4 feet above the curb height and are contained 1 foot inside the sidewalk edge and 1 foot inside the street curb edge. For example, if you have a six-foot-wide grass ROW, one foot in on any edge will allow you a four-foot-wide planting area in the center (City Code: 14-5F).

Planting near a vision triangle: At the intersection of two roads, planted vegetation must be kept under 2-feet high in the vision triangle, which is 30-feet back from the point where the street curb intersects. Outside of the vision triangle, vegetation must be kept under 4-feet tall (City Code: 14-5D), to avoid the obstruction of vision for travelers.

If you have questions about planting trees or other vegetation in the City ROW, please visit www.icgov.org/tree-planting, or contact Iowa City Housing & Inspections staff at 319-356-5135, or Forestry staff at the Iowa City Parks & Recreation Dept. at 319-356-5100.



BEFORE YOU DIG:

Contact Iowa One Call to locate any public underground lines at, **811** or iowaonecall.com

Planting your new tree.

a) Dig a hole that is the depth of the root ball and **3x the width**.

b) Massage the root ball to loosen the roots. This helps prevent roots from strangling the tree.

c) Place tree in hole. The root collar/flare should be above the ground by one to three inches.

d) Backfill the hole half-way and straighten tree. Do not add anything to the hole "for drainage" such as rocks.

e) Fill the rest of the hole and water (slow trickle) at the drip line for approximately 20 minutes or until soil is moist. Water your new tree weekly for 30 minutes on a trickle at the drip line.

f) Mulch away from the trunk around the tree in a donut shape. No more than three inches deep, and spread away from the tree as wide as three to four feet.



Your tree, year round.

Safety.



Safety first.

Always wear personal protective equipment that's right for the job: gloves, eye protection and proper footwear.

When in doubt, call a professional. A certified arborist knows best tree care practices.

Pruning.



Avoid pruning when you plant a new tree unless you're removing dead branches.

Dead or diseased branches can be pruned at any time of the year.

Less is more. In Iowa City's climate trees need pruning from time to time.

Watering.



New trees less than 3 years old

Water your tree when the ground is not frozen. (spring, summer and fall)

Put your hose at the drip line, water **weekly** for 30 minutes on a trickle.

Mature trees more than 3 years old

Water your tree in drought conditions when the ground is not frozen. (spring, summer and fall)

Put your hose at the drip line, water **biweekly** for 30 minutes on a trickle.

Mulch.



Mulch helps retain water and insulate roots.

Mulch should be **3 inches deep**, kept away from the trunk, and spread out as wide as three to four feet in a doughnut shape.

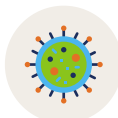
It can be replenished every two to three years.

Tree health: storms, diseases and pests.

Storm damage.



Diseases.



Pests.



Iowa City has year-round weather ranging from snowstorms, powerful winds, and severe thunderstorms with lightning strikes and hail. Take the steps after a storm to check your trees and help them recover.

- **Look at each of your trees.**
Check to see if there is a disturbance in the soil, cracks in the trunk and/or main branches.
- **Be cautious.**
When assessing damaged trees be on the lookout for hazardous trees with broken limbs that could cause damage.
- **Call a professional.**
Call a certified arborist to help clear debris, assess and properly prune your damaged trees.

Trees under stress can become prone to pests.

Tree stressors include drought, broken branches, cracks in the trunk, and roots sitting in too much water.

- **Chewing insects.**
Eat plant tissue like leaves, flowers, buds, roots and twigs.
- **Sucking insects.**
Insert their mouths into the tissue of the tree and feed on the juices.
- **Boring insects.**
Spend time feeding beneath the bark of the tree as a young insect.



REMEMBER: The easiest way to help prevent and manage pests and disease is to keep your trees healthy by watering, mulching, and pruning when needed. When in doubt, call a professional.

Visit icgov.org/root4trees for more information.